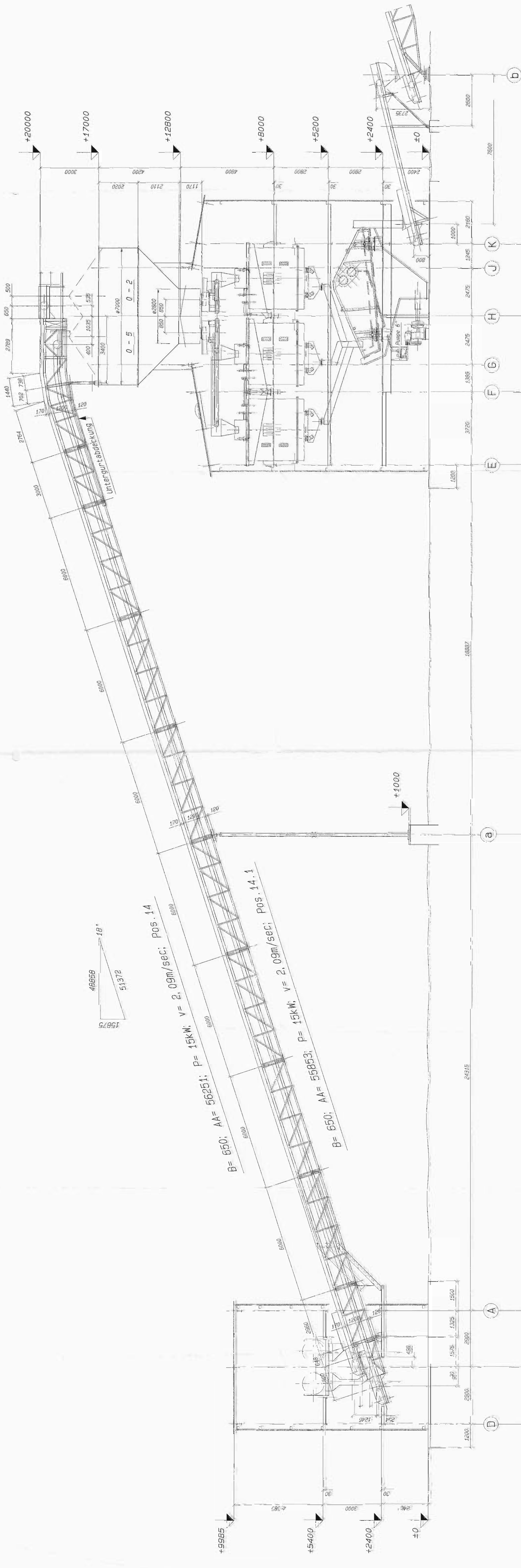


1422
9°
1440



Pos. 14

$v = 2,09 \text{ m/sec.}$

$P = 15 \text{ kW.}$

$AA = 56251.$

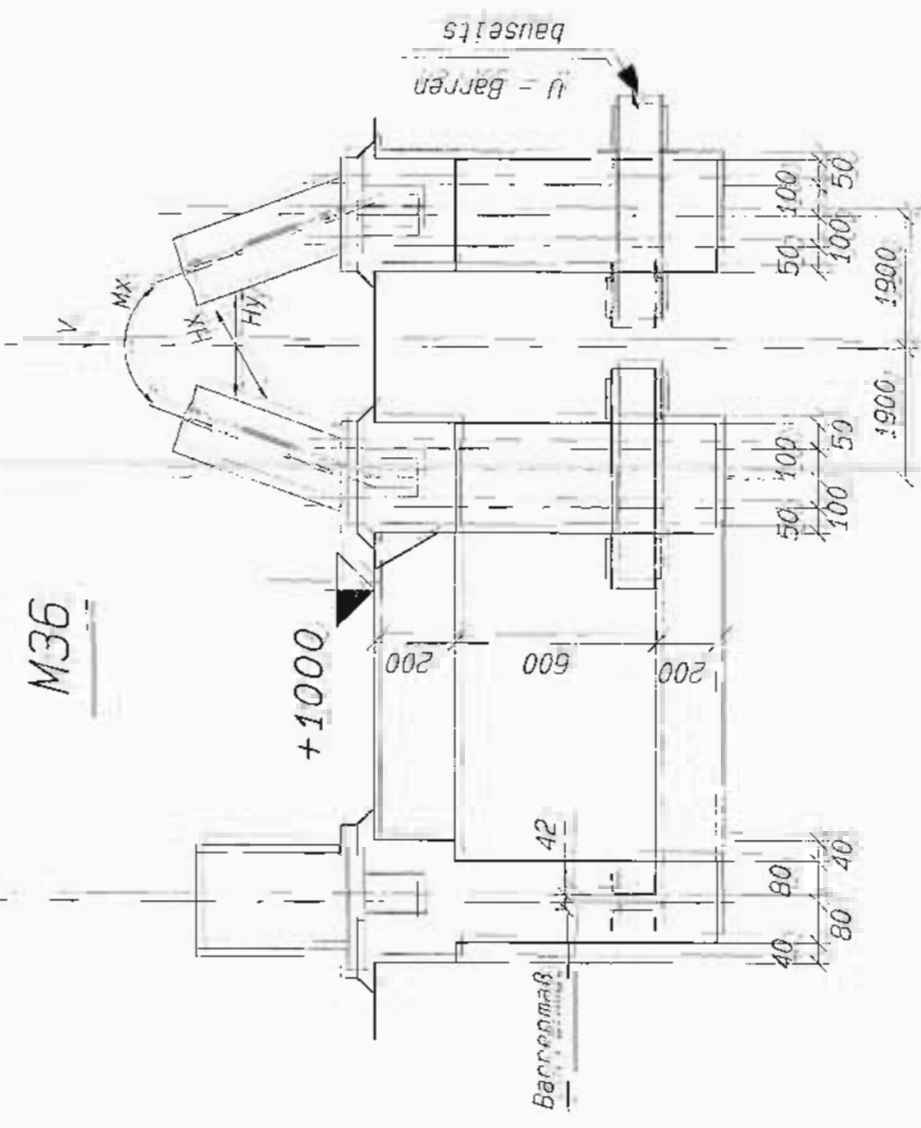
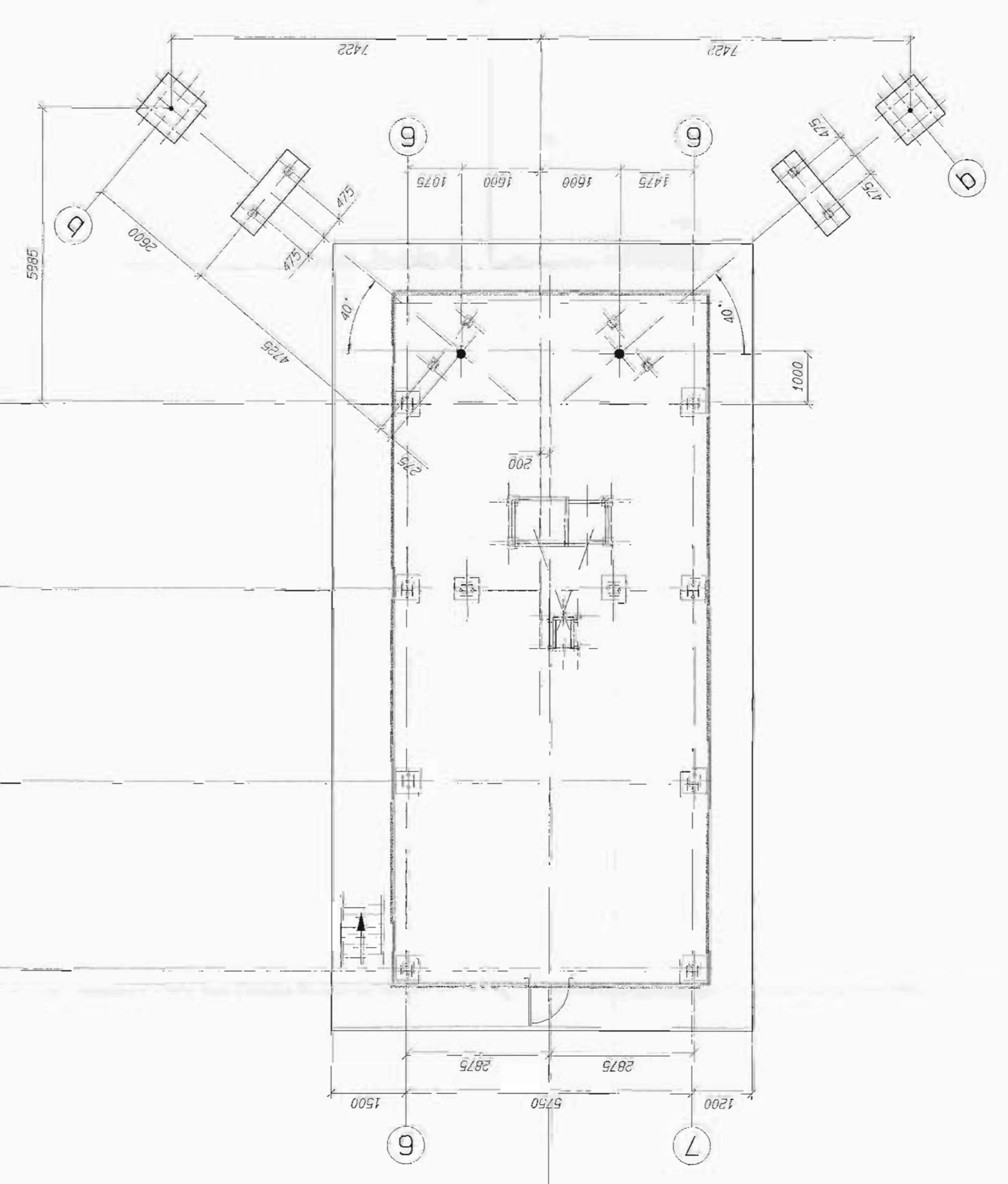
$B = 650.$

$v = 2,09 \text{ m/sec.}$

$P = 15 \text{ kW.}$

$AA = 56853.$

$Pos. 14.1$



A - Stütze Reihe a	
V_{max}	80 kN
V_{min}	180 kN
F_{max}	±10 kN
F_{min}	±50 kN
M_{max}	±500 kNm